

K-900 Battery Load Banks

---Customized for all industries



K-900 is Kongter's updated battery load bank. It includes a series customized load bank models that feature unique state-of-art design and excellent performance. They facilitate your work for DC load and battery capacity testing. Kongter offers various load bank models to cover a wide voltage range from 12V to 480V nominal voltages with current up to 800A. They are applied for users from various industries including telecom, power utility, data center, forklift and others. With its optional CDL (Cell Data Logger), discharge values of EACH cell could be monitored on the load bank screen and PC simultaneously by using the Kongter's data view software.

Kongter's Advantages

- 1) K-900 series load bank have many customized models to meet precise requirement of customers from various industries.
- 2) Its optional data loggers enable a wireless communication with computer. And PC software will control and monitor the whole process of discharge including voltage of EACH cell.
- 3) Standard discharge function and other functions like assistant discharge, parallel load and monitor for external loads. Compatible with non-Kongter load banks.
- 4) Rugged, reliable and durable product quality with very competitive price.
- 5) Timely and professional tech support with precise understanding of customer need

Features

- ◆ TFT touch screen with simple and user-friendly data setting and operation
- ◆ Optional wireless CDL enables real-time PC monitor during measurement
- ◆ It sets 4 conditions for discharge auto shut-down:
Discharge time, discharge capacity, string voltage and cell voltage
- ◆ Discharge data adjustable during battery discharge
- ◆ Parallel connection of up to 5 units for higher discharge current
- ◆ Assistant discharge to increase load current to even non-Kongter load banks
- ◆ Can monitor measurement data of other load banks or battery charger
- ◆ Accurate data measurement and vivid waveforms of PC software
- ◆ Auto sorting for lag-out batteries during discharge
- ◆ Powerful management software for data analysis and report generation
- ◆ Automatic protection upon over-heating and overload

Optional Cell Data Logger (CDL)

Each CDL is recording voltage of up to 12 cells for all cell types (1.2V, 2V, 6V and 12V). It has wireless communication with K-900 main unit and PC. Kongter also offers customized CDL for non-standard battery types. CDL numbers are easily expandable to cover more battery volumes.

CDL can also work with SDL (String Data Logger) without load bank for monitoring of cell voltage, string voltage, temperature and current in the same software.

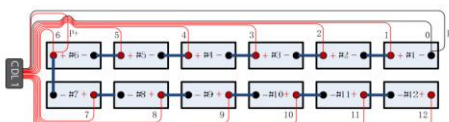
Its Connection:

One CDL is connected with 12 cells of 1.2V, 2V, 6V or 12V. Therefore, different battery systems will require different amounts of CDLs.

Optional CDL (Cell Data Logger)



Connection with all cell types:



Composition:

Standard parts:

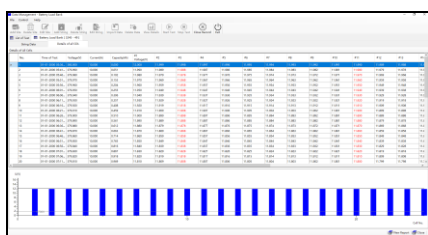
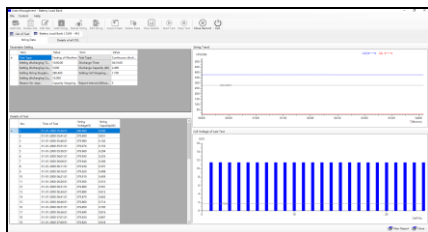
- ◆ Main unit of load bank
- ◆ Data View software
- ◆ Carrying case (for small & medium size models)
- ◆ Set of 3m/10ft load cables
- ◆ 3m/10ft voltage test leads
- ◆ Grounding cable
- ◆ AC Power cord
- ◆ USB with backup info
- ◆ Antenna

Optional:

- ◆ CDL package
- ◆ Current clamp for external loads

Technical Parameters

Power supply	1) AC220V or AC110V, 50/60Hz; 2) DC (from batteries, optional for some models)
Cell type	1) Standard: 2V, 6V and 12V 2) Customized: 1.2V or other uncommon cell types.
Discharge voltage range	10V-576V Customized as nominal voltages of 12V, 24V, 48V, 72V, 80V, 110V, 120V, 220V, 240V, 380V and 480V.
Discharge current range	Single load bank: 10A-800A Parallel load: 10A-4000A (up to 5 loads) Current is customer-tailored per different string voltage
Accuracy	Current: 1% Voltage: 0.5% – 0.8%
Resolution	Current: 0.1 A or 0.5% Voltage: 0.001 V
Sampling Interval	5s –1min
Discharge pattern	Constant current discharge
Display	128*64 pixel, 5" TFT touch screen (resistive screen)
CDL power supply	9~36Vdc
CDL measurement range	0~15Vdc
Data transfer	USB, RS485 & Wifi (for CDL to load bank and PC)
Cooling	Forced air cooling
Operation Temperature	0°C~40°C (32 – 104 °F)
Humidity	5%~90% Relative humidity
Standard	CE marking, EMC standard
Main Unit Dimension ²	XS: 200*275*420mm S: 200*350*570mm M: 200*425*570mm L: 300*425*760mm XL: 300*425*896mm XXL: 440*725*650mm XXXL: 440*1025*650mm
Main Unit Weight	XS: 11kg (24 lbs) S: 15kg (33 lbs) M: 18 kg (40 lbs) L: 33 kg (73 lbs) XL: 45 kg (99 lbs) XXL: 50 kg (110 lbs) XXXL: 60kg (132 lbs)



K-900 PC Software

- 1) Quantity of CDL and cable in standard CDL package are based on 2V, 6V &12V cells. For test of 1.2V batteries, you will require some more CDLs and cables.
- 2) Measurement range, dimension and weight vary depending on different models. Please confirm with our sales representative upon orders.

PC Software with Remote Control

All standard load units of K-900 come with PC software. It could remotely control the load bank via wifi and have a real-time monitor for the whole process of discharge, analyze the measurement data and easily print out detailed test report. Same PC software is also compatible for Kongter's whole series battery test equipment.

Order Information

Kongter offers many customized models of battery load bank to fit almost all users of different industries. For telecom, power, forklift and other industries, we have built regular models as below. If you do not find the right model, please kindly contact our sales representative with your detailed requirement.

Load Bank Model	Model Code	Main Unit Size	Maximal Discharge Current (Amp) at:								
			12V	24V	36V	48V	80V	125V	240V	380V	480V
24V 300A	DLB-2430	XS	--	300	--	--	--	--	--	--	--
24/36/48V 300A	DLB-2343	L	--	300	300	300	--	--	--	--	--
24/36/48/72/80V 200A (12V-80V, 0- 200A)	DLB-2348	XXXL	100	200	200	200	200	--	--	--	--
24/48V 200A	DLB-2482	M	--	200	--	200	--	--	--	--	--
48V 150A	DLB-4815	XS	--	--	--	150	--	--	--	--	--
48V 300A	DLB-4830	M	--	--	--	300	--	--	--	--	--
48V 400A	DLB-4840	M	--	--	--	400	--	--	--	--	--
48V 500A	DLB-4850	L	--	--	--	500	--	--	--	--	--
48V 600A	DLB-4860	L	--	--	--	600	--	--	--	--	--
48/125V* 100A	DLB-4811	M	25	50	75	100	64	100	--	--	--
48/125V 200A	DLB-4812	L	50	100	150	200	128	200	--	--	--
48/125V 300A	DLB-4813	XL	75	150	225	300	192	300	--	--	--
48/240V* 100A	DLB-4821	L	25	50	75	100	33	52	100	--	--
48V 200A/240V 150A (12-240V, 0-200A)	DLB-2415	XXXL	50	100	150	200	50	78	150	--	--
80V 100A	DLB-8010	XS	--	--	--	--	100	--	--	--	--
80V 200A	DLB-8020	S	--	--	--	--	200	--	--	--	--
125V 100A	DLB-1110	S	--	--	--	--	--	100	--	--	--
125V 200A	DLB-1120	M	19	38	57	77	128	200	--	--	--
125V 300A	DLB-1130	L	28	57	86	115	192	300	--	--	--
125V 400A	DLB-1140	L	38	76	115	153	256	400	--	--	--
125V 500A	DLB-1150	XL	--	96	144	192	320	500	--	--	--
125/240V 100A	DLB-1121	XL	--	19	28	38	64	100	100	--	--
125/240V 150A	DLB-1215	XXXL	14	28	43	57	96	150	150	--	--
240V 150A	DLB-2215	L	--	15	22	30	50	78	150	--	--
240V 200A	DLB-2220	XL	--	20	30	40	66	104	200	--	--
380V 50A	DLB-3850	M	--	--	--	--	--	--	--	50	--
380V 100A	DLB-3810	XL	--	--	--	--	--	--	--	100	--
480V 100A	DLB-4810	XXXL	--	--	--	10	16.6	26	50	79	100

NOTE*: Per different countries' requirement in power utility, we use either 110V or 125V, 220V or 240V.

Kongter Test & Measurement Co., Limited

#405, Bldg 62, Songpingshan, Langshan Rd., Shenzhen China

TEL: +86-755-2691 6832 Web: www.kongter.com Email: sales@kongter.com