



K-3980 Smart DC Load Bank

---Customized load banks for all industries

K-3980 series customized DC load banks feature unique design and excellent performance that will facilitate your work for DC load and battery capacity testing. We offer many different load bank models to cover a wide voltage range from 12V to 480V nominal voltages with current up to 600A. They are applied for users from various industries including telecom, power utility, data center, forklift and others. With its optional DAC, discharge values of EACH cell could be monitored on the load bank screen and PC simultaneously by using the Kongter's data view software.

Our Advantages

- 1) K-3980 has different customized models to meet requirement of customers from various industries exactly.
- 2) Its optional data loggers enable a wireless communication with computer. And it will monitor the whole process of discharge including voltage of EACH cell.
- 3) Standard discharge function and other functions like assistant discharge, parallel load, external load, charge monitor. Compatible with non-Kongter load banks.
- 4) Rugged, reliable and durable with very good price.

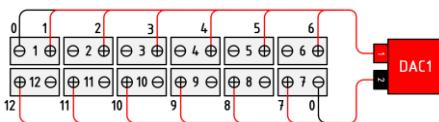
Features

- ◆ Optional wireless DAC enables real-time PC monitor during measurement
- ◆ It sets 4 conditions for discharge auto shut-down:
Discharge time, discharge capacity, string voltage and cell voltage
- ◆ Continued discharge available when previous discharge is stop abnormally
- ◆ Parallel connection of two units for higher discharge current
- ◆ Assistant discharge to add load to even non-Kongter load banks
- ◆ Can monitor measurement of other load banks or battery charger
- ◆ Accurate data measurement and vivid waveforms of PC software
- ◆ Auto sorting for lag-out batteries during discharge
- ◆ Safe circuits avoid damage to battery during measurement
- ◆ Powerful management software for data analysis and report generation
- ◆ Automatic protection upon over-heating and overload

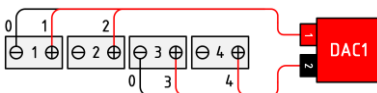
Optional DAC



Connection with 1.2V or 2V cells:



Connection with 6V or 12V cells:



Optional Data Acquisition Case (DAC)

Each DAC is recording voltage of up to 12 cells. It has wireless communication with K-3980 main unit and PC. And it is capable to measure all type of batteries (1.2V, 2V, 6V & 12V). Kongter also offers customized DAC for other battery types.

DAC numbers are easily expandable to cover more battery volumes.

Its Connection:

One DAC is connected with 12 cells of 1.2V, 2V or 4 cells of 12V (or 6V). Therefore, in different battery systems, they require different amounts of DACs. With DAC, K-3980 and Kongter PC software will be able to monitor and record voltage of each cell together with other parameter like String Voltage, Current, Discharge Capacity and so on.

Composition:

Standard parts:

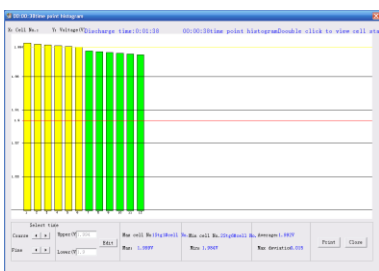
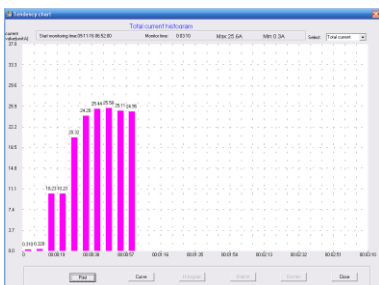
- ◆ Main unit of load bank
- ◆ Data View software
- ◆ Carrying case (for small & medium size models)
- ◆ Set of 3m/10ft load cables
- ◆ 3m/10ft voltage test leads
- ◆ PC communication terminal
- ◆ Ground cable
- ◆ AC Power cord
- ◆ USB with backup info
- ◆ Antenna

Optional:

- ◆ DAC package
- ◆ Current clamp for external loads
- ◆ Parallel load cable

Technical Parameters

Power supply	1). AC 220V/110V, 50/60Hz; 2). DC (from batteries, optional for some models)
Cell type	1) Standard: 1.2V ¹ , 2V, 6V and 12V 2) Customized: 12V ONLY or other uncommon battery types.
Discharge voltage range	10V-552V Customized as nominal voltages of 12V, 24V, 48V, 72V, 80V, 110V, 120V, 220V, 240V, 380V and 480V.
Discharge current range	Single load bank: 10A-600A Parallel load: 10A-1200A Current is customized per different string voltage
Accuracy	Current: 1% Voltage: 0.5% – 0.8%
Resolution	Current: 0.1 A or 0.5% Voltage: 0.001 V
Sampling Interval	5s –1min
Discharge pattern	Constant current
Display	128*64 pixel LCD
Data transfer	USB, Radio Frequency (for DAC to load bank)
Operation Temperature	0°C ~40°C (32 – 104 °F)
Humidity	5% ~90% Relative humidity
Standard	CE marking, EMC standard
Main Unit Dimension ²	S: 400 x 177 x 288 mm (15.7 x 7 x 11.3 in) M: 520 x 202 x 355 mm (20.5 x 8 x 14 in) L: 555 x 225 x 435 mm (22.5 x 8.9 x 17.2 in) XL: 603 x 400 x 740 mm (23.7 x 15.7 x 29 in) XXL:762 x 406 x 737 mm (30 x 16 x 29 in)
Main unit Weight	S: 11 kg (24 lbs) M: 16 kg (36 lbs) L: 21 kg (47 lbs) XL: 42 kg (93 lbs) XXL: 55 kg (122 lbs)



K3980 PC Software

Note:

- 1) Quantity of DAC and cable in standard DAC package are based on 2V, 6V and 12V. For measurement of 1.2V Ni-cd batteries, you will require some more DACs and relevant cables.
- 2) Measurement range, dimension and weight vary depending on different models. Please confirm with our sales representative upon orders.

Kongter PC Software

All standard load units of K-3980 come with PC software. With the software, you could have a real-time data monitor for the whole process of discharge, analyze the measurement data and easily print out the complete report.

Order Information

Kongter offers many customized models of battery load bank to fit almost all users of different industries. For telecom, power, forklift and other industries, we have the regular models of load bank as below. If you do not find the right model, please kindly contact our sales representative with your detailed requirement.

Load Bank Model	Code	Maximal Discharge Current (Amp) at:								
		12V	24V	36V	48V	80V	125V	240V	380V	480V
24V-300A	LB-2430	--	300	--	--	--	--	--	--	--
24/36/48V-300A	LB-2343	150	300	300	300	--	--	--	--	--
24/36/48/72/80V 200A (12V-80V, 0- 200A)	LB-2348	100	200	200	200	200	--	--	--	--
24/48V-200A	LB-2482	--	200	--	200	--	--	--	--	--
48V-150A	LB-4815	--	--	--	150	--	--	--	--	--
48V-300A	LB-4830	--	--	--	300	--	--	--	--	--
48V-400A	LB-4840	--	--	--	400	--	--	--	--	--
48V-500A	LB-4850	--	--	--	500	--	--	--	--	--
48V-600A	LB-4860	--	--	--	600	--	--	--	--	--
48/125V*-100A	LB-4811	25	50	75	100	64	100	--	--	--
48/125V-200A	LB-4812	50	100	150	200	128	200	--	--	--
48/125V-300A	LB-4813	75	150	225	300	192	300	--	--	--
48/240V*-100A	LB-4821	25	50	75	100	33	52	100	--	--
48 200A/240V 150A (12-240V, 0-200A)	LB-2415	50	100	150	200	50	78	150	--	--
80V-100A	LB-8010	--	--	--	--	100	--	--	--	--
80V-200A	LB-8020	--	--	--	--	200	--	--	--	--
125V-100A	LB-1110	--	19	28	38	64	100	--	--	--
125V-200A	LB-1120	19	38	57	77	128	200	--	--	--
125V-300A	LB-1130	28	57	86	115	192	300	--	--	--
125V-400A	LB-1140	38	76	115	153	256	400	--	--	--
125V-500A	LB-1150	--	96	144	192	320	500	--	--	--
125/240V-100A	LB-1121	--	19	28	38	64	100	100	--	--
125/240V-150A	LB-1215	14	28	43	57	96	150	150	--	--
240V-150A	LB-2215	--	--	--	--	--	--	150	--	--
240V-200A	LB-2220	--	20	30	40	66	104	200	--	--
380V-50A	LB-3850	--	--	--	--	--	--	--	50	--
380V-100A	LB-3810	--	--	--	--	--	--	--	100	--
480V-100A	LB-4810	--	--	--	10	16.6	26	50	79	100

NOTE*: Per different countries' requirement in power utility, we use either 110V or 125V, 220V or 240V.