

BT-3915 Battery Resistance Tester

---Cost effective tester for battery regular measurement

Regular maintenance and test is a "must-have" procedure for standby batteries. It is also recommended by IEEE latest standard for maintenance and testing of standby batteries. The excellent performance of BT-3915 for testing cell internal resistance and voltage will help you eliminate the weak batteries and ensure their performance.



Features

- ◆ Wide test range: 5~6000Ah, compatible for cell of 1.2V, 2V, 6V and 12V
- ◆ Smart and portable hand-held device, rugged and easy-to-go
- ◆ Colorful touch screen with optional operations of keyboard and touch screen
- ◆ Simultaneously test voltage and internal resistance of battery
- ◆ Fast testing for battery and string in seconds with testing data auto saving
- ◆ Strong anti-interference in high current with stable and accurate performance
- ◆ Low testing frequency, effectively avoid interference from capacitive resistance
- ◆ Direct USB drive for software update and data transfer to computer
- ◆ Powerful PC management software, convenient for data storage and analysis
- ◆ Big memory for testing data storage of more than 3000 cells
- ◆ Buzzer alarm function and over voltage protection
- ◆ Auto-calibration function before testing enhances the testing accuracy
- ◆ Build-in reference value and self-defined value for comparison of testing result
- ◆ Retest and compensation function: any faulty operation or omission could be retested simply with one click
- ◆ Optional function: can wirelessly transfer data to IT system via GPRS model

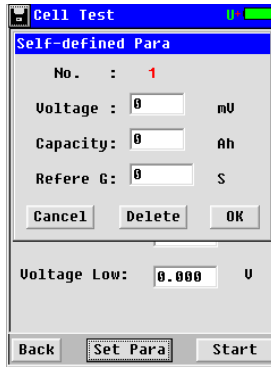
Technical Parameters

| | |
|----------------------------|--|
| Resistance range | 0.00mΩ~ 100mΩ |
| Voltage range | 0.000V ~16V |
| Test resolution | |
| -Voltage | 1mv |
| -Resistance | 0-999μΩ: 1 μΩ 1-9mΩ: 10μΩ(0.01mΩ) 10-99mΩ: 100 μΩ(0.1mΩ) |
| Test accuracy | |
| -voltage | ±0.2%rdg ±6dgt |
| -Resistance | 0μΩ-250μΩ: 8%±6DGT 250μΩ-500μΩ: 3%±6DGT 500μΩ-100mΩ: 1%±6DGT |
| Power supply | Li-ion battery (7.2V 2400mAh) |
| Working time | More than 5 hours after full charge |
| Measuring data memory | >3000 cells |
| Operation environment | 0°C to 40°C, 90% R.H |
| Measuring cells per string | 1≤cells≤254 |
| LCD display | 320*240 pixel, 3.5" TFT screen |
| Net weight (package) | 2 kg |
| Dimension | L210*W110*H60 mm |

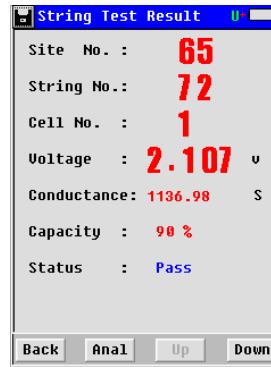


Pin Type Probe

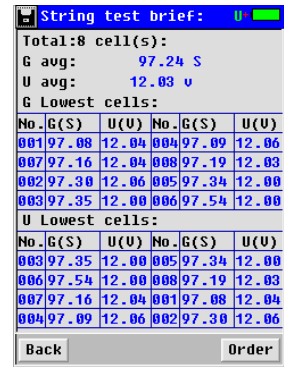
Functional Display



Self-defined parameter



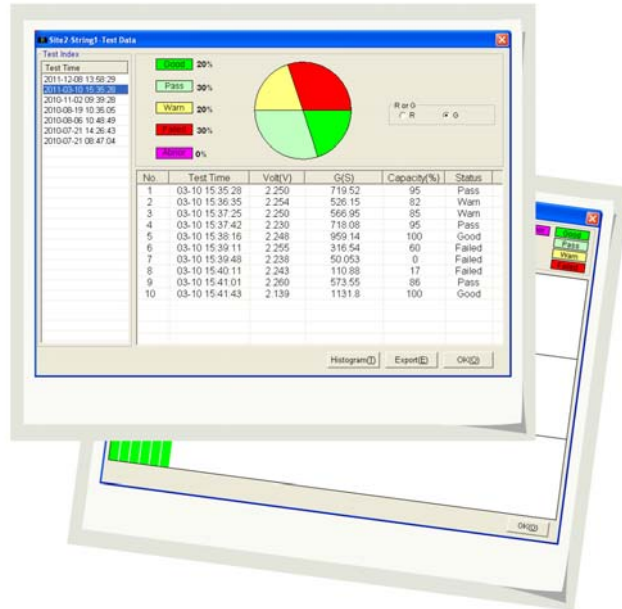
Vivid testing result



String test summary

Kongter PC Software

BT-3915 Data View software provides smart solutions for data analyzing, battery condition tracking and report printing.



Carrying Bag

Kongter Test & Measurement Co., Limited

#405, Bldg 62, Songpingshan, Langshan Rd., Shenzhen China

TEL: +86-755-2691 6832 Web: www.kongter.com Email: sales@kongter.com