

## BDL-3926C Battery Data Logger

Wireless Monitor for string voltage, cell voltage, current and temperature  
Customized Configuration...



BDL-3926C could be used individually to reflect battery status or used together with Kongter's other battery test equipments like battery charger and DC load bank. For different battery systems, it has customized configuration from 12V to 480V or upper. And it has easy expansion for all UPS systems.

### Feature

- ◆ Small weight modular design and very easy to install and operate
- ◆ It tests all battery types of 1.2V, 2V, 6V and 12V
- ◆ Simple wireless communication between batteries and PC software
- ◆ Simultaneously monitor cell voltage, string voltage, current & temperature
- ◆ Data auto saving in PC, no need for data transfer
- ◆ Work with battery charger or load bank to reflect battery status
- ◆ One cell DAC is connected with multiple batteries, save your time and money
- ◆ Could be used as temporary voltage monitoring or as permanent battery monitor
- ◆ Direct powered by battery, no need for extra power supply
- ◆ Sampling rate is customer programmed for real time monitor and report generation

### Technical Specification

Item	Testing Range	Accuracy
Cell voltage	0~16V	±0.5%
String voltage	12~700V (customized)	±0.5%
Current testing	0~1000A (customized CT)	±1%
Temperature measurement	-25~55°C	±1°C
Power supply	Cell DAC	DC12V±15% from battery
	String DAC	DC24V±15% from battery
	Wireless communication modular	DC5V±5% from PC
PC software	Two functions: Monitor and data management	
Communication	Radio Frequency	
Communication distance	100m (not blocked)	
Communication frequency	433MHz	
Weight	0.15 kg/per modular	
Size	121×113×40 mm	
Warning for	Communication disconnection, Over voltage and Low voltage	
Working environment	Temperature: 0~55°C Relative humidity: ≤85%RH	
Data sampling interval	0.1 second/point	



String DAC

## Composition

### Cell DAC>>>

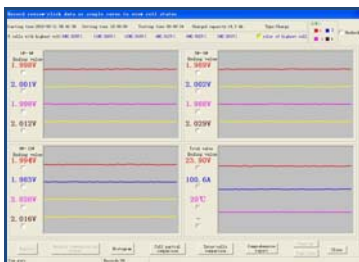
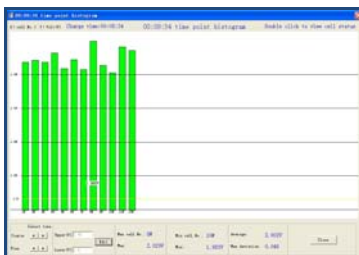
It monitors voltage of each cell. For different battery system, depending on different battery systems, each BDL-3926C model will require different amount of Cell DACs.

### String DAC>>>

It monitors string voltage, string current and ambient temperature. Each String DAC will come with a customized current sensor for testing string current. Each BDL-3926C Data Logger will only need ONE String DAC.

### Communication terminal>>>

Connected with PC to collect data from Cell DACs and String DAC



PC Software

## Order information

Model	For Battery System	Amount of Cell DAC
DL48	48V	with 2 Cell DACs
DL110	110V	with 5 Cell DACs
DL110-1	110V	with 8 Cell DACs
DL220	220V	with 10 Cell DACs
DL220-1	220V	with 16 Cell DACs
DL380	380V	with 16 Cell DACs
DL380-1	380V	with 3 Cell DACs

### NOTE:

1. All above standard units also include 1 string DAC, 1 communication terminal, 1 RS232-USB converter and BDL-3926C Data View software.
2. All standard units are for measurement cell type of 2V, 6V and 12V. Measurement of 1.2V batteries is optional. Kongter also offer specific Cell DAC for measurement 12V only. One of such DAC can hook up with 12 cells of 12V.