

BCD-3932T Battery Charger/Discharger

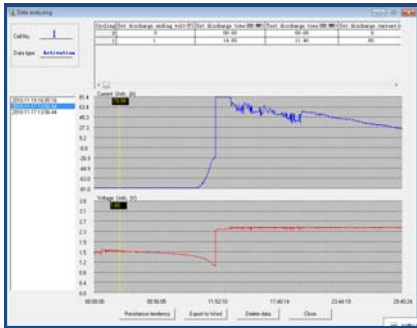
Three units in one: Charger, Discharger & Activator
Small solution for single cell



It is a compact unit for regular maintenance of single cell, especially for old cell. It plays three roles for complete solutions: charger, discharger and activator, which will facilitate your maintenance for batteries. The three functions could be used individually or comprehensively. When used comprehensively, lag-out battery will experience low-volt constant current charging and discharging in one or multi-circles (1~99). By activating the disabled Active-Material on battery electrode plate, it amends the battery malfunction caused by chemical failure and thus boosts the capacity of battery. It is very significant for resources utilization and efficiency increasing.

Features

- ◆ Touch screen and keypad operation
- ◆ Small size, portable and user-friendly
- ◆ Applicable to single cell of 1.2V, 2V, 4, 6V, 8V and 12V
- ◆ 3 functions in one: charging, discharging and activation
- ◆ These functions could be used separately or comprehensively
- ◆ All-rounded and accurate testing results with vivid waveforms
- ◆ Could charge/discharge battery singly and circularly for many times
- ◆ Long-time monitoring of the battery condition
- ◆ Safety circuits prevent damage to battery
- ◆ Direct USB drive for data transfer to PC
- ◆ Powerful PC software for testing data analysis and report printing
- ◆ Simple and fast for software update



PC Software

Specification

Power supply: AC220V or 110V
 LCD display: 320*240 pixels
 Com port: USB
 Internal memory: 16MB
 External memory: 4GB (USB)
 Temperature: 5°C ~ 50°C
 Humidity: 5% ~ 90%RH
 Dimension: 395*370*200 mm
 Weight: 10Kg (main unit)
 Standard: CE marking
 EMC standard
 LVD EN60335

Technical Parameters

| Parameters | Measurement Range | Resolution | Accuracy |
|---------------------|--|------------|----------|
| Charging current | 1-50A(cell: 1.2V) | 1A | 1% |
| | 1-100A (cell: 2V) | | |
| | 1-30A (cell: 4V, 6V, 8V & 12V) | | |
| Discharge current | 1-25A(cell: 1.2V) | 1A | 1% |
| | 1-100A(cell: 2V) | | |
| | 1-30A(cell: 4V, 6V, 8V & 12V) | | |
| Voltage measurement | 1.2V: 1.08V-1.41V (Discharge) 1.08V-1.44V (Charge) | 0.1V | 0.25% |
| | 2V: 1.8V-2.35V (Discharge) 1.8V-2.4V (Charge) | | |
| | 4V: 3.6V-4.7V (Discharge) 3.6V-4.8V (Charge) | | |
| | 6V: 5.4V – 7.05V (Discharge) 5.4V-7.2V (Charge) | | |
| | 8V: 7.2V – 9.4V (Discharge) 7.2V-9.6V (Charge) | | |
| | 12V: 10.8V – 14.1V (Discharge) 10.8V-14.4V (Charge) | | |